

REGIONAL TRANSIT ISSUE PAPER

Agenda Item No.	Board Meeting Date	Open/Closed Session	Information/Action Item	Issue Date
6	01/26/15	Open	Action	01/21/15

Subject: Approving Easement Agreement with Sacramento Municipal Utility District for installation and maintenance of Electrical Improvements

ISSUE

Whether to approve an Easement Agreement with the Sacramento Municipal Utility District to install electrical utilities within RT's right of way.

RECOMMENDED ACTION

Adopt Resolution No. 15-01-_____, Approving an Easement Agreement with the Sacramento Municipal Utility District to Install Electrical Utilities within Sacramento Regional Transit District's (RT) Right of Way at 10th Street.

FISCAL IMPACT

None.

DISCUSSION

The subject property is located within RT's right of way at 10th Street in the City of Sacramento and is further identified in Attachment A (APN: 006-0274-013).

Adjacent property owner RII Properties LLC requested that the Sacramento Municipal Utilities District (SMUD) install electrical facilities to the W.P. Fuller Building located at 1015 R Street. SMUD has requested an easement interest in RT's right of way to install electrical utilities in order to serve the W.P. Fuller Building. SMUD has requested a 13' wide easement to install and maintain two transformers, primary pull box equipment and eight 4" electrical conduits approximately 155' in length along RT's right of way. SMUD has requested an additional 10' wide easement to install and maintain six 4" electrical conduits with pull tape under RT tracks, two secondary boxes and a pit for the laydown area perpendicular to the primary easement.

RT purchased this property as part of the Q/R Alley Track Project for the construction, maintenance and operation of railroad trackage. This is a non-operable rail segment mainly used for storage. RT Engineering and Construction Staff have reviewed and approved the plans for installation of the electrical utilities. The easement interest granted will be in perpetuity. In accordance with the SMUD/RT Memorandum of Understanding entered into October 27, 2008, this is a no fee easement.

Staff recommends approval of the Easement Agreement between RT and SMUD for installation of electrical utilities within RT's right of way.

Approved:

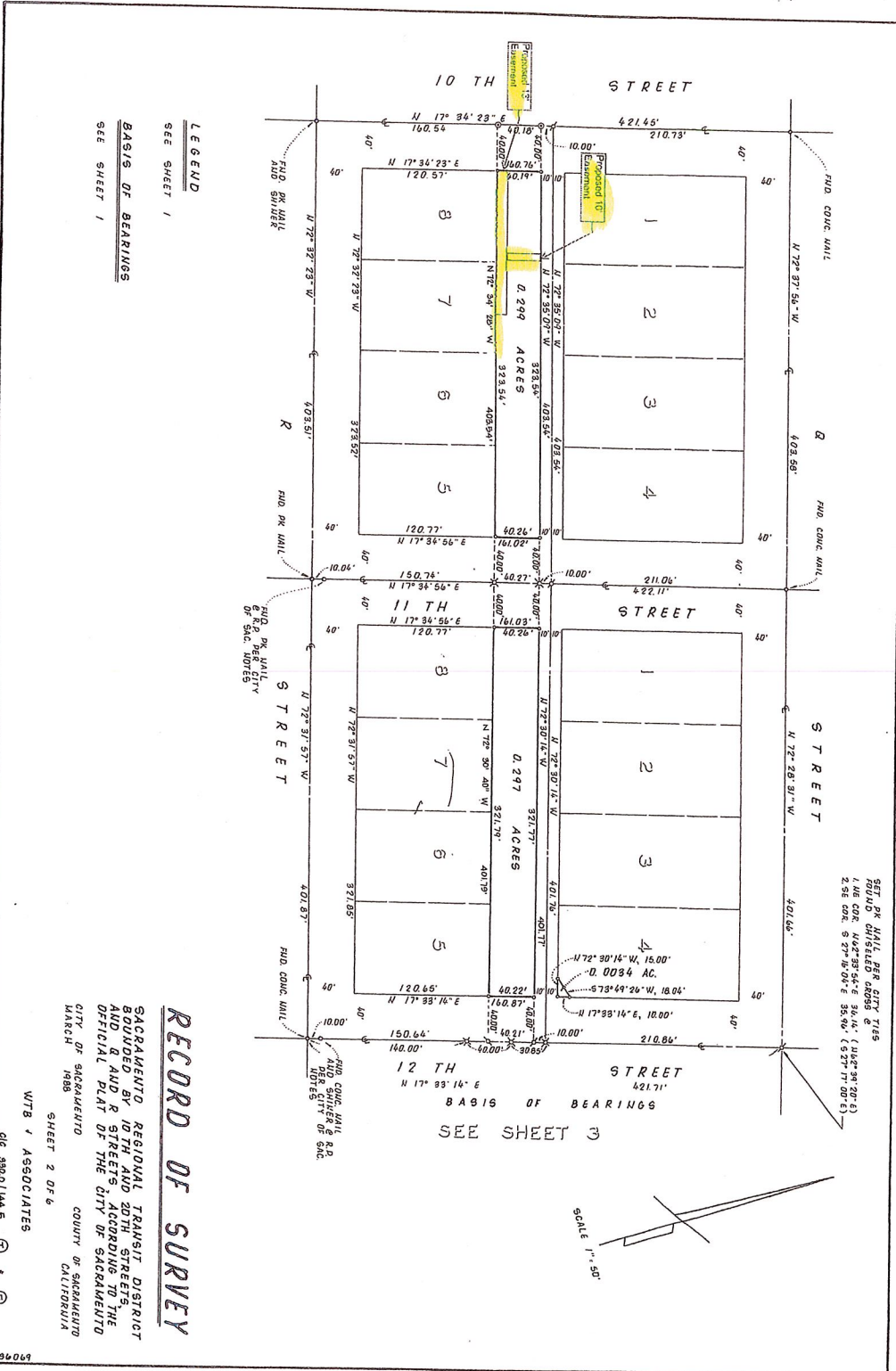
Presented:

Final 01/21/15

General Manager/CEO

Real Estate Administrator

J:\Real Estate\Issue Papers\2015 Issue Papers\Approving an Easement Agreement with SMUD.doc



LEGEND
SEE SHEET 1
BASIS OF BEARINGS
SEE SHEET 1

RECORD OF SURVEY

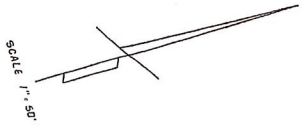
SACRAMENTO REGIONAL TRANSIT DISTRICT
BOUNDED BY 10TH AND 12TH STREETS,
AND Q AND R STREETS, ACCORDING TO THE
OFFICIAL PLAT OF THE CITY OF SACRAMENTO
CITY OF SACRAMENTO COUNTY OF SACRAMENTO
MARCH 1988

WTR & ASSOCIATES
400 3800/1445 ① & ②

19098

SET PK NAIL PER CITY TIES
FOUND CHISELED 0095 @
1.16 COR. N45°35'44"E 34.14' (148°24'20"E)
2.98 COR. S27°35'04"E 35.96' (S27°17'00"E)

12 TH STREET
BASIS OF BEARINGS
SEE SHEET 1



RESOLUTION NO. 15-01-_____

Adopted by the Board of Directors of the Sacramento Regional Transit District on this date:

January 26, 2015

APPROVING AN EASEMENT AGREEMENT WITH THE SACRAMENTO MUNICIPAL UTILITY DISTRICT TO INSTALL ELECTRICAL UTILITIES WITHIN SACRAMENTO REGIONAL TRANSIT DISTRICT'S RIGHT OF WAY AT 10th STREET

BE IT HEREBY RESOLVED BY THE BOARD OF DIRECTORS OF THE SACRAMENTO REGIONAL TRANSIT DISTRICT AS FOLLOWS:

THAT, the Easement Agreement between the Sacramento Regional Transit District , therein referred to as "RT," and Sacramento Municipal Utility District, therein referred to as "SMUD," whereby RT grants SMUD a non-exclusive 13' wide easement in gross for the purpose of installing and maintaining two transformers, a primary pull box equipment and eight 4" electrical conduits within a distance of 155'+/- parallel to RT's tracks and a 10' wide easement to install and maintain six 4" electrical conduits with pull tape a minimum of 6' under RT's tracks, two secondary boxes and a pit for the laydown area within RT's right of way, is hereby approved.

THAT, the General Manager/CEO is hereby authorized and directed to execute said Easement Agreement.

JAY SCHENIRER, Chair

A T T E S T:

MICHAEL R. WILEY, Secretary

By: _____
Cindy Brooks, Assistant Secretary